

THE HEAVY DUTY, 10-TON CAPACITY, CUSTOMIZABLE CRAWLER CARRIER

Sold & distributed by:



KODIAK K10



UNMATCHED TRACTION
& SUSPENSION



1 OR 2 PERSON CAB
OPEN OR CLOSED

20,000 lbs payload

210 HP

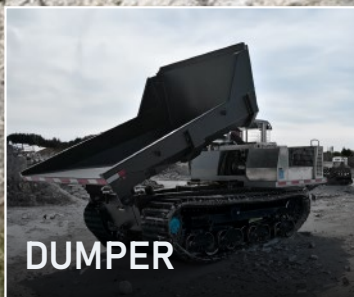
20" ground clearance

28" tracks

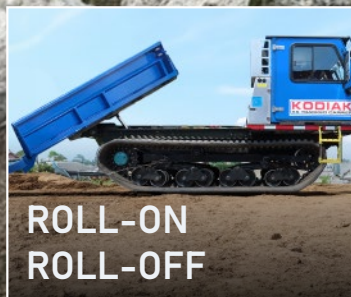
CUSTOMIZED FOR ANY INDUSTRY



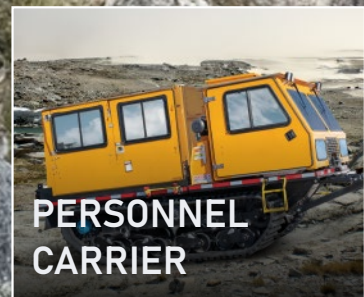
FLATBED



DUMPER



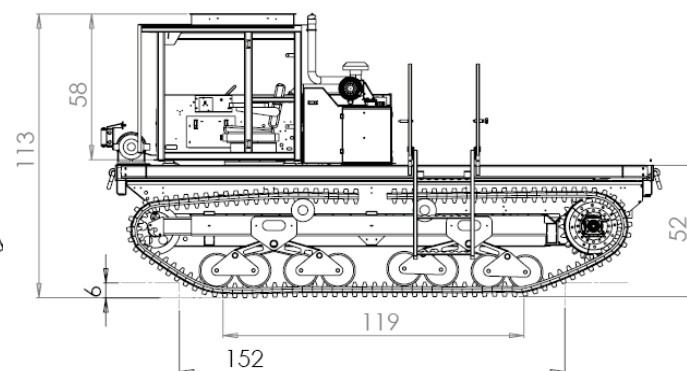
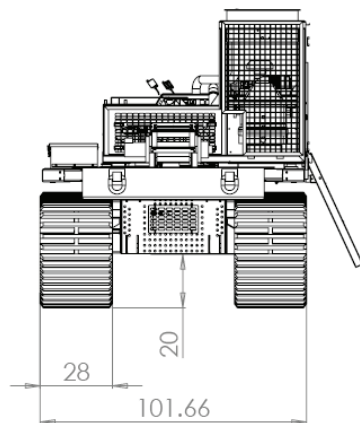
ROLL-ON
ROLL-OFF



PERSONNEL
CARRIER



WWW.TRACKINC.COM | INFO@TRACKINC.COM | 844-846-7958



DIMENSIONS / WEIGHT		FRAME / SUSPENSION	
Overall length	241" with plow and dump box	Type	Corten Welded Tub
Overall width	101.66"	Suspension	Sprung walking beam with dual articulating bogie wheels
Overall height	113"	Suspension system : <ul style="list-style-type: none">➤ 2 independent idler wheels with oil bath hubs and steel face seals➤ 2 rear drive sprockets➤ 16 steel wheels, 1 4" dia	
Ground clearance	20"		
Weight	24,000 lbs, bare carrier		
Payload	20,000 lbs		
GVWR	44,000 lbs		
PERFORMANCE		POWER TRAIN FOR HYDROSTATIC DRIVE	
Maximum speed	7 mph loaded	Transmission	Hydrostatic, 2 -speed
Inside turning radius	0 ft	Service Brakes	Positive deceleration through the hydrostatic transmission
Ground pressure (6" penetration)	2.69 PSI unloaded 5.57 PSI loaded	Parking brakes	Multi-Disc, spring applied & pressure released
Maximum gradeability	Static test when loaded		
- Uphill	35 ⁰ (70%) continuous		
- Side-hill	20 ⁰ (36%)		
Normal driving range	18 hours		
ENGINE		ELECTRICAL	
Make	Kubota 09 Series	Voltage	12 V
Model	V5009-TIE5	(2) batteries, capacity	1,000 CCA
Type	4 cylinder, Tier 4, Turbo charged diesel	Alternator Capacity	150 Amps
Displacement	5.0 liters	Ground	Negative
Horsepower	210 HP at 2, 050 RPM		
Torque	651 ft lbs at 1, 500 RPM		
Fuel capacity	180 gals		
DEF tank	10.5 gals		
TRACKS			
One piece 28" rubber tracks with steel reinforcements			
STEERING			
Independent dual joysticks or available steering wheel			
STANDARD FEATURES			
1-Man open cab ROPS certified		12v primary fuel filter heater, secondary fuel filter with water separator	
Vinyl seat with mechanical suspension		Electronic engine protection system	
2-point seat belt		Fire extinguisher	
Full instrumentation, illuminated panel gauge		Backup alarm and horn	
High powered LED lights: 2 front & 1 rear on cab, 1 strobe on top		1 set of operations, parts & service manuals	
120v block heater, muffler , spark arrestor , glow plugs		Standard one-year warranty	

*Specifications subject to change without notice.