

MOGUL *Master*

"Simply The Finest Snowmobile Trail Groomers"



172 Bogner Dr
Newport, VT 05855
844.846.7958
WWW.TRACKINC.COM



1890 US Highway 8
Monico, WI 54501
844.846.7958
INFO@TRACKINC.COM

A snowmobile trail groomer must do three things to effectively groom a snowmobile trail: cut the moguls; process the snow; and finally, compact the snow. And no trail groomer does this better than a Mogul Master Multi Blade Planer. Just ask one thousand seven hundred and fifty Mogul Master owners across North America!

Cut the Moguls: To simply take the top half of a Mogul and drop it into the valley of the next mogul is asking for a re-grooming job to happen... very soon, and at a big cost. The Mogul Master's multiple, angled cutting blades are designed to easily remove moguls, right down to the bottom of the mogul, removing all "memory" of the moguls from the trail so your groomed trail stays groomed far longer.

The standard serrated cutting blades are very effective in those hard icy trail conditions. Blade support struts have been rotated 45 degrees to promote the free flow of snow through the drag.



Process the Snow: Snow must be effectively "processed" by the trail groomer to ensure a smooth, flat, durable trail. To complete this processing, the snow that the groomer is working must: (a) be thoroughly mixed or blended, (b) have the sharp edges of the individual snow flakes broken down, (c) be de-aerated and (d) have its temperature raised ever so slightly due to the friction created by the groomer. The Mogul Master's multiple blade design processes snow like no other trail groomer can.

The heat treated cutting blades are adjustable and have a unique adjustment stop that keeps the blade in place when set. Spring tripping cutting blades are a must for early season grooming.

Compact the snow: Once the moguls have been eliminated and the snow is processed, the trail groomer must compact the snow to a hard, quick setting finish. Regardless of the model of Mogul Master, the packing pan is designed with high compaction in mind.

Multiple adjustable and replaceable skegs in the pan reduce side hill slippage on uneven terrain. The high, radiused lip on the rear of the pan "ramps" the drag up onto the snow when backing up.

The hydraulic rear wheel assembly with high floatation tires provides plenty of height when needed.



High Flow Multi-Blade Planer:

The Mogul Master HF MBP is designed to allow very high quantities of snow to flow through the drag freely. Incorporating fewer blades than a standard Mogul Master MBP, yet very aggressive at cutting hard packed moguls when conditions demand, the HF is a must for those areas that experience high snow accumulations. And the HF will groom in wet snow at above freezing temperatures like no other trail groomer can.



Extremely rugged in design, all Mogul Masters are manufactured to exacting standards to provide years of trouble free service. Choose from a pintle hitch, extended reinforced pintle hitch, gooseneck hitch or a hydraulic ramsteer hitch to maximize track vehicle performance.



All Mogul Masters incorporate a unique floating device on the hitch to reduce scalping when cresting a hill.

The chain hooks on the hitch make the connection to the track vehicle a simple, one man job that takes only minutes.



Front "nose cones" are reinforced to cut through hard packed snow. Tree guards and shear pin hitches eliminate the "oops" when cornering.



Mogul Masters are available for all snow grooming vehicles from utility type snowmobiles to high horsepower industrial track vehicles.

This photo details the 7 blade XLMBP 16 series drag, a lighter yet aggressive Mogul Master, used with track vehicles such as the Tucker 1000 and the Prinoth Trooper.

MOGUL MASTER AC AGGRESSIVE CUT OPTION

In our pursuit to offer the best working snowmobile trail groomers on the snow, for over two decades The Shop Industrial Inc. has relentlessly looked for ways to improve the best selling snowmobile trail groomer on the planet... **Mogul Master Multi-blade Planers**. Some years we carried out subtle improvements to the line with design changes here or there to increase the strength in a particular area. Other years we would perform more substantial changes that lead to dramatic improvements. For instance when we introduced the 11 blade and 7 blade Mogul Master models... remarkable advancement in how the Mogul Master performed and the quality of trail it is able to create.

In keeping with our goal of constant improvement The Shop Industrial Inc. offers an option that can be added to **any one** of our Mogul Master models to once again improve the performance of the best working trail groomers in the business. We call it **AC AGGRESSIVE CUT**. There are conditions when moguls can get extremely hard, frozen like concrete and can be very difficult to cut. The problem stems from the side rails riding on top of the moguls and not letting the blades get into those rock hard moguls. What we have done with the **AC** is reposition the outside blades to extend to the outside of the side rails so the rails cannot ride on the moguls. Simple yet effective. Very, very aggressive when the Mogul Master needs to be but at the same time an easier pull and improved performance when the conditions are not as demanding.

C/W - ALL STANDARD MOGUL MASTER FEATURES, PLUS:

- RE-ENGINEERED SIDE RAILS TO ALLOW THE OUTSIDE BLADES TO EXTEND TO THE OUTSIDE OF THE RAILS
- ELIMINATE THE NOSE CONES SO THE FIRST THING THAT CONTACTS THE MOGUL IS NOTHING BUT BLADE
- DOUBLE SPRINGS ON ALL OUTSIDE BLADES
- MODIFIED BLADE DEPTH SETTINGS

NOTE: The AC option will add 8% to 10% to the weight of the Mogul Master (see weights on specification sheet on last page)

Mogul Master HF (High Flow) AC (Aggressive Cut) EXT (Extended)



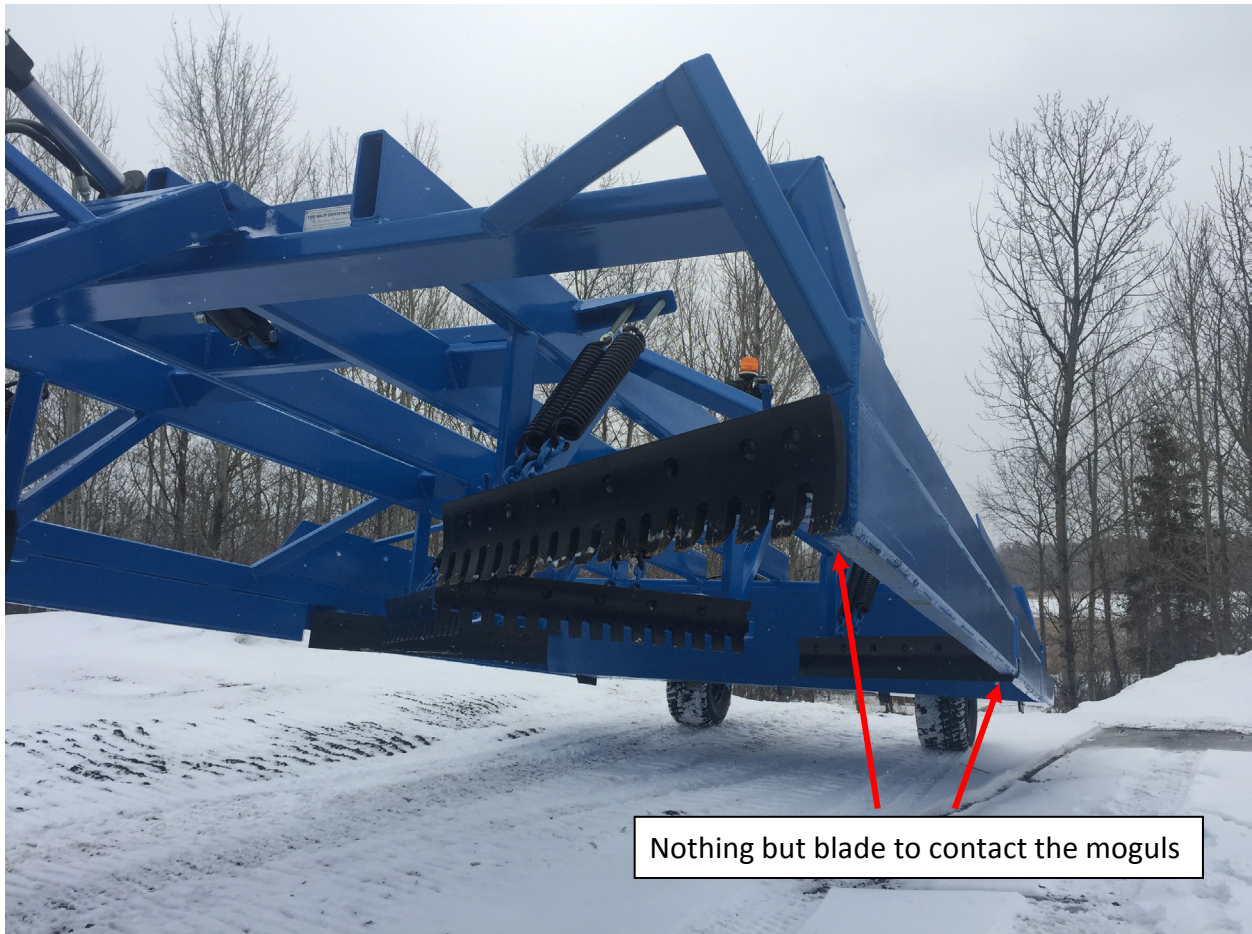
This is a photo of a new 6 blade MBP 18-09 **HF (High Flow) AC EXT**. The **AC** and **EXT** features are available on any model of Mogul Master.

The **HF (High Flow)** feature allows snow to flow through the drag freely. Fewer blades than our popular 11 blade model yet very aggressive when conditions demand. The **HF** works very well when the snow is wet which we see more often with warmer winters. **Note a manual rear V-Blade is included. (Not depicted here.)**

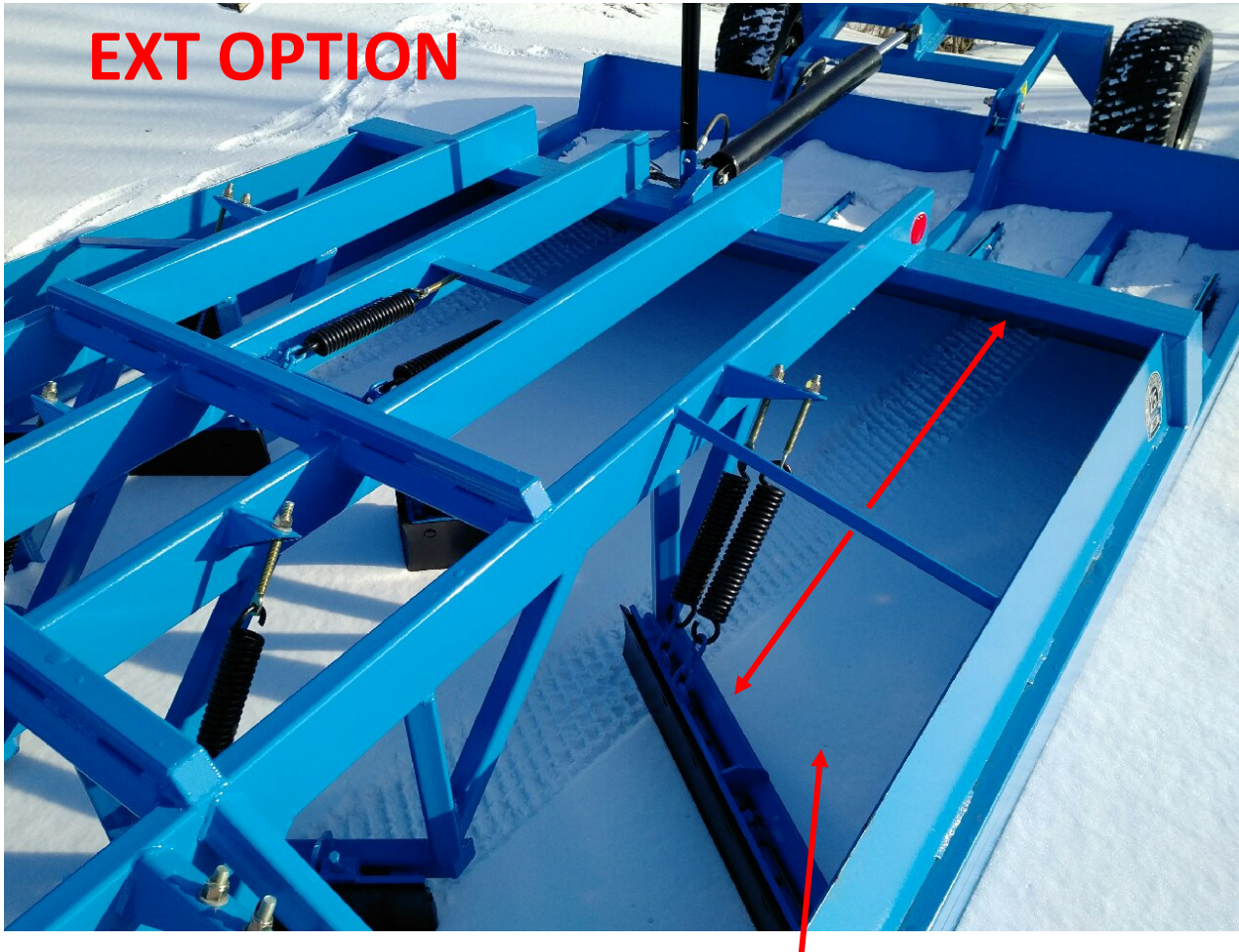
The **AC (Aggressive Cut)** feature includes eliminating the front Nose Cone. The front of the Mogul Master that contacts the moguls consists of blades and only blades.

The **AC** feature also includes sectioning the side rails to allow the outside blades to extend to the outside edge of those side rails. The bottom of the Mogul Master that contacts the moguls consists of blades and only blades. The side rails cannot ride on hard frozen moguls.

The **EXT (Extended)** feature includes a larger area between the last blades and the front of the packing pan. This allows more snow to collect in that area and flow under the pan to be compacted before it builds up in the forward main frame area of the Mogul Master.



EXT OPTION



Increased distance between the last set of blades and the leading edge of the packing pan. This large area allows the snow to collect and feed under the pan to be compacted.

MOGUL *Master*

"Simply The Finest Snowmobile Trail Groomers"

MODEL #	WEIGHT (with standard hitch)	LENGTH (does not include hitch or wheels)	WIDTH	NO. of BLADES
MBP 18-08	3,660 lbs	17' 6"	8' 6"	11
MBP 18-09	3,800 lbs	17' 6"	9' 6"	11
MBP 18-10	4,000 lbs	17' 6"	10' 4"	11
MBP 18-12	4,250 lbs	18'	12'	11
HF MBP 18-08	3,060 lbs	17' 6"	8' 6"	6
HF MBP 18-09	3,410 lbs	17' 6"	9' 6"	6
HF MBP 18-10	3,610 lbs	17' 6"	10' 4"	6
HF MBP 18-12	3,810 lbs	18'	12'	6
MBP 08-08	2,180 lbs	10' 6"	8' 6"	4
MBP 08-09	2,480 lbs	10' 6"	9' 6"	4
MBP 08-10	2,680 lbs	10' 6"	10' 4"	4
MBP 08-12	3,030 lbs	10' 6"	12'	4
XLMBP 16-07	2,655 lbs	15' 3"	7' 6"	7
XLMBP 16-08	2,785 lbs	15' 3"	8' 6"	7
XLMBP 16-09	2,905 lbs	15' 3"	9' 6"	7
XLMBP 16-10	3,035 lbs	15' 3"	10' 4"	7
XLMBP 16-07 HD	3,000 lbs	15' 3"	7' 6"	7
XLMBP 16-08 HD	3,130 lbs	15' 3"	8' 6"	7
XLMBP 16-09 HD	3,250 lbs	15' 3"	9' 6"	7
XLMBP 16-10 HD	3,380 lbs	15' 3"	10' 4"	7
ULMBP 14-06	1,450 lbs	12' 3"	6' 4"	4
ULMBP 14-07	1,575 lbs	12' 3"	7' 4"	4
ULMBP 14-08	1,700 lbs	12' 3"	8' 4"	4
ULMBP 9-06	940 lbs	9'	6' 3"	7
ULMBP 9-07	1020 lbs	9'	7' 3"	7
ULMBP 9-08	1100 lbs	9'	8' 3"	7
ULMBP 8-04	360 lbs	8'	4'3"	4
ULMBP 8-04 AC	395 lbs	8'	4'3"	4
ULMBP 8-04 ST	390 lbs	8'	4'3"	4
ULMBP 8-04 ST AC	425 lbs	8'	4'3"	4
ULMBP 8-05	660 lbs	8'	5'3"	5
ULMBP 8-05 AC	695 lbs	8'	5'3"	5
ULMBP 8-05 ST	690 lbs	8'	5'3"	6
ULMBP 8-05 ST AC	760 lbs	8'	5'3"	6
ULMBP 8-06	665 lbs	8'	6'3"	5
ULMBP 8-06 AC	700 lbs	8'	6'3"	5
ULMBP 8-06 ST	695 lbs	8'	6'3"	6
ULMBP 8-06 ST AC	775 lbs	8'	8'3"	6

172 Bogner Dr
Newport, VT 05855
844.846.7958
WWW.TRACKINC.COM



1890 US Highway 8
Monico, WI 54501
844.846.7958
INFO@TRACKINC.COM

LES GRATTES MOGUL MASTER

DANS LA POURSUITE D'OFFRIR LES MEILLEURES GRATTES DE MOTONEIGE DEPUIS PLUS DE DEUX DÉCENNIES, *THE SHOP INDUSTRIAL INC.* A RECHERCHÉ SANS RELÂCHE DES MOYENS D'AMÉLIORER LA GRATTE LA PLUS VENDUE SUR LA PLANÈTE... LA MOGUL MASTER. CERTAINES ANNÉES, ILS ONT APPORTÉ DES AMÉLIORATIONS SUBTILES AUX GRATTES AVEC DES CHANGEMENTS DE CONCEPTION ICI OU LÀ POUR LE PERFECTIONNEMENT D'UN POINT EN PARTICULIER. D'AUTRES ANNÉES, ILS ONT APPORTÉ DES CHANGEMENTS PLUS SUBSTANTIELS QUI ONT APPORTÉ DES AMÉLIORATIONS SPÉCTACULAIRES. PAR EXEMPLE, LORSQU'ILS ONT INTRODUIT LES GRATTES À 7 OU 11 LAMES, ILS ONT CRÉÉ UN CHANGEMENT REMARQUABLE SUR LES SENTIERS EN UTILISANT.



**101 RUE PRINCIPALE N
RICHMOND, QC
(819) 300-2586
INFO@TRACKINC.COM**

LES MOGUL MASTER SONT DISPONIBLES POUR TOUS LES VÉHICULES D'ENTRETIEN DE SENTIERS - DES MOTONEIGES DE TYPE UTILITAIRES JUSQU'AU PLUS GROSSES DAMEUSES DU MARCHÉ.



MOGUL *Master*



MOGUL

Master

TRAXCIK

INC

MODÈLES DISPONIBLES

MODÈLE	POIDS (AVEC ATTELAGE STANDARD)	LONGUEUR (SANS ATTELAGE OU ROUES)	LARGEUR	# DE LAMES
MBP 18-08	3,660 lbs	17' 6"	8' 6"	11
MBP 18-09	3,800 lbs	17' 6"	9' 6"	11
MBP 18-10	4,000 lbs	17' 6"	10' 4"	11
MBP 18-12	4,250 lbs	18'	12'	11
DS MBP 18-08	3,060 lbs	17' 6"	8' 6"	6
DS MBP 18-09	3,410 lbs	17' 6"	9' 6"	6
DS MBP 18-10	3,610 lbs	17' 6"	10' 4"	6
DS MBP 18-12	3,810 lbs	18'	12'	6
MBP 08-08	2,180 lbs	10' 6"	8' 6"	4
MBP 08-09	2,480 lbs	10' 6"	9' 6"	4
MBP 08-10	2,680 lbs	10' 6"	10' 4"	4
MBP 08-12	3,030 lbs	10' 6"	12'	4
XLMBP 16-07	2,655 lbs	15' 3"	7' 6"	7
XLMBP 16-08	2,785 lbs	15' 3"	8' 6"	7
XLMBP 16-09	2,905 lbs	15' 3"	9' 6"	7
XLMBP 16-10	3,035 lbs	15' 3"	10' 4"	7
XLMBP 16-07 HD	3,000 lbs	15' 3"	7' 6"	7
XLMBP 16-08 HD	3,130 lbs	15' 3"	8' 6"	7
XLMBP 16-09 HD	3,250 lbs	15' 3"	9' 6"	7
XLMBP 16-10 HD	3,380 lbs	15' 3"	10' 4"	7
ULMBP 14-06	1,450 lbs	12' 3"	6' 4"	4
ULMBP 14-07	1,575 lbs	12' 3"	7' 4"	4
ULMBP 14-08	1,700 lbs	12' 3"	8' 4"	4
ULMBP 9-06	940 lbs	9'	6' 3"	7
ULMBP 9-07	1020 lbs	9'	7' 3"	7
ULMBP 9-08	1100 lbs	9'	8' 3"	7
ULMBP 8-04	360 lbs	8'	4' 3"	4
ULMBP 8-04 AC	395 lbs	8'	4' 3"	4
ULMBP 8-04 ST	390 lbs	8'	4' 3"	4
ULMBP 8-04 ST AC	425 lbs	8'	4' 3"	4
ULMBP 8-05	660 lbs	8'	5' 3"	5
ULMBP 8-05 AC	695 lbs	8'	5' 3"	5
ULMBP 8-05 ST	690 lbs	8'	5' 3"	6
ULMBP 8-05 ST AC	760 lbs	8'	5' 3"	6
ULMBP 8-06	665 lbs	8'	6' 3"	5
ULMBP 8-06 AC	700 lbs	8'	6' 3"	5
ULMBP 8-06 ST	695 lbs	8'	6' 3"	6
ULMBP 8-06 ST AC	775 lbs	8'	6' 3"	6